



Totem Nightstand

Good bedside manners...but not just a nightstand

Fits in anywhere you want.

Mounted on the wall or standing free...your choice

Hang them at the height best suited for your bed

All sorts of storage... A drawer and a shelf or a drawer

and a cabinet. A notch for the cords. A door with storage.

Crenulated drawer fronts.

Designed by Ted

Dimensions:

Wall-mounted/Standard 36W x 19.5D x 29H

Wall-mounted/Petite 25W x 19.5D x 29H

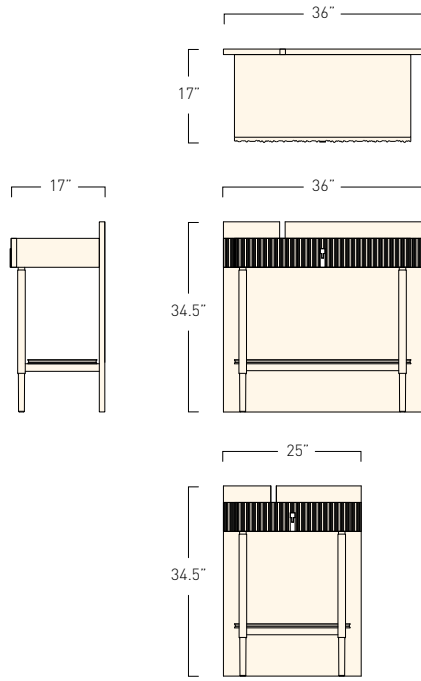
Freestanding/Standard 36W x 17D x 34.5H

Freestanding/Petite 25W x 17D x 34.5H

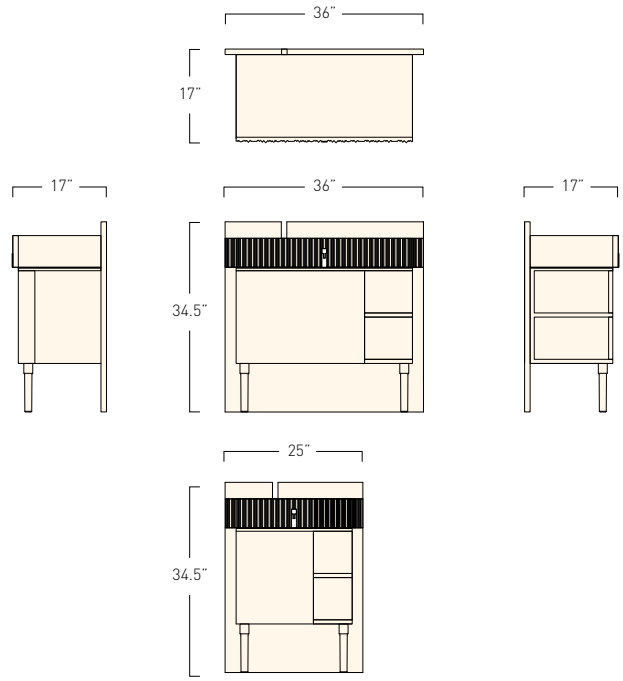
TED BOERNER

TOTEM NIGHTSTANDS

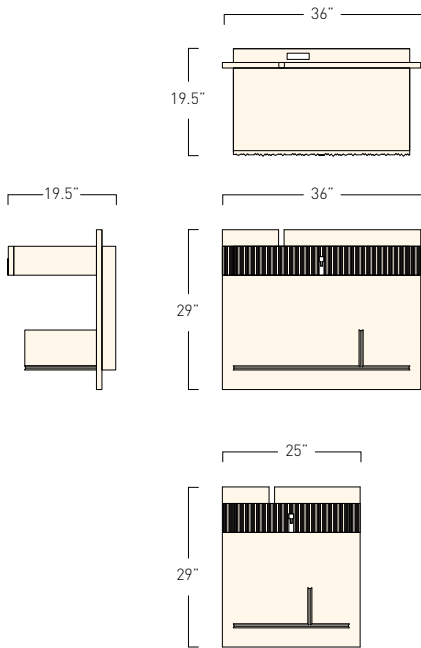
Freestanding with Shelf



Freestanding with Cabinet



Wall-Mounted with Shelf



Wall-Mounted with Cabinet

